



FLEXI CLASSES
LTL LANGUAGE SCHOOL

Алфавит 18 букв (1)

Alfavít

18 búkv

Alphabet 18 Letters (1)

LEVEL
INTRO

PRONUNCIATION

MC



1. Vowels: А, О, Ё, И, Э, Ю, Я

2. Consonants: З, К, М, С, Т, Б, Г, Д, Л, П, Ф

3. How to read syllables












The Russian alphabet, which is called Cyrillic, is based on the Greek alphabet. 24 out of 33 letters in Russian come from the Greek alphabet. The remaining letters were created specifically to represent sounds particular to the Slavic language.

**А Б В Г Д Е Ё
Ж З И Й К Л М
Н О П Р С Т У
Ф Х Ц Ч Ш Щ
Ъ Ы Ь Э Ю Я**



Letters that are similar in both Russian and English

| Vowels/Consonants Upper/Lower case | How they are written | Similar sounds in English |
|---------------------------------------|--|------------------------------|
| A a |  | [a] in f ather |
| O o |  | [o] in b ottle |
| З з |  | [z] in z oo |
| К к |  | [k] in k itten |
| М м |  | [m] in m ap |
| С с |  | [s] in s it |
| Т т |  | [t] in t oy |



Let's read the syllables below:

m+a = ma m+o = mo

z+a = za z+o = zo

k+a = ka k+o = ko

c+a = ca c+o = co

t+a = ta t+o = to

CONSONANTS

VOWELS

m
z
k
c
t

a
o



PRACTICE

Практика



Мама
máma
mother



КОТ
kot
cat



Мак
mak
poppy



МОСТ

most
bridge



СОК

sok
juice



КТО?

kto
Who?



Letters which are not in the English alphabet but which represent similar sounds

| Vowels/Consonants Upper/Lower case | How they are written | Similar sounds in English |
|---------------------------------------|-------------------------|------------------------------|
| Ё ё | Ё ё | [yo] in y onder |
| И и | И и | [ee] in s ee |
| Э э | Э э | [e] in m e t |
| Ю ю | Ю ю | [yoo] in u niverse |
| Я я | Я я | [ya] in y ard |
| Б б | Б б | [b] in b it |
| Г г | Г г | [g] in g o |
| Д д | Д д | [d] in d o |
| Л л | Л л | [l] in p e ople |
| П п | П п | [p] in p et |
| Ф ф | Ф ф | [f] in f ace |



Let's read the syllables below:

п+э=пэ

б+э=бэ

и+ф=иф

э+ф=эф

и+д=ид

ю+д=юд

л+э=лэ

л+и=ли

я+г=яг

ё+г=ёг

CONSONANTS

VOWELS

Б
Г
Д
Л
П
Ф

Ё
И
Э
Ю
Я



Да
da
Yes



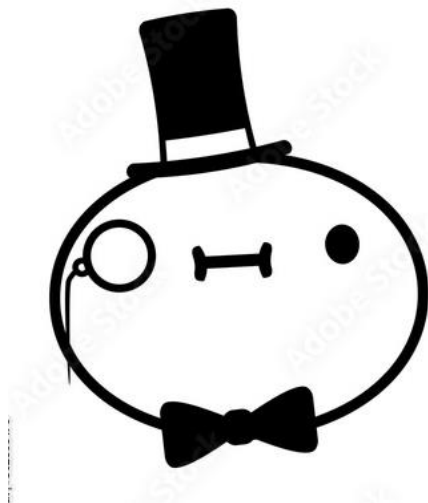
Два
dva
two



Дом
dom
house



Лес
les
forest



Сэр
ser
sir



Бар
bar
bar

Let's read the words below:

мама

КОТ

мак

МОСТ

СОК

КТО?

Let's read the words below:

да

два

дом

лес

сэр

бар

Match the picture and the pronunciation:



мама



КОТ



ДОМ

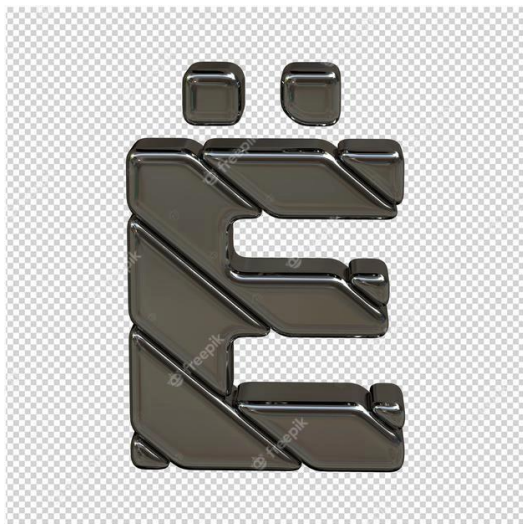


МОСТ

What is the "youngest" letter in the Russian alphabet?

The letter **ё** is the most recent addition to the Russian alphabet, having its very own birthday - November 29th, 1783. It is also the only letter to be considered optional in Russian spelling.

Despite being optional, the new addition **ё** has taken its place in the Russian alphabet, along with all the other letters and sits between **е** and **ж**.





Read the syllables:

1. мама

2. да

3. кот

4. дом



FLEXI CLASSES
LTL LANGUAGE SCHOOL

This study material was created by Flexi Classes and can be used for free by anyone who wants to learn this beautiful language.

LEARN, TRAVEL, AND LIVE THE LANGUAGE (LTL)

Want to learn another language?

Japanese www.flexiclasses.com/online-japanese-courses

Korean www.flexiclasses.com/online-korean-courses

Vietnamese www.flexiclasses.com/online-vietnamese-courses

Hokkien www.flexiclasses.com/online-hokkien-courses

Shanghainese www.flexiclasses.com/online-shanghainese-courses

Cantonese www.flexiclasses.com/online-cantonese-courses

LEARN CHINESE IN CHINA

Beijing www.ltl-beijing.com

Taipei www.ltl-taiwan.com

Shanghai www.ltl-shanghai.com

Singapore www.ltl-singapore.com

All Destinations www.ltl-school.com

DO NOT MODIFY, EDIT, OR CHANGE THIS PDF